

**HOSE REELS**

HOSE REELS GENERAL INFORMATION . . . . . 46

501 SERIES DOUBLE PEDESTAL ARM HOSE REELS . . . . . 47

506 SERIES SINGLE ARM HOSE REELS . . . . . 48

507 SERIES INDIVIDUALLY ENCLOSED REELS . . . . . 50

504 SERIES DOUBLE PEDESTAL ARM HOSE REELS . . . . . 52

505 SERIES DOUBLE PEDESTAL ARM FULL METAL HOSE REELS . . . . . 54

508 SERIES HEAVY DUTY HIGH DELIVERY REELS . . . . . 56

COMPACT REELS FOR AIR AND CABLE . . . . . 58

HOSE REEL MOUNTING ACCESSORIES . . . . . 59

WORKSITE TWO, FLUID AND ENERGY SERVICE COLUMN . . . . . 60



**SAMOA** hose reels are used around the world and they have been designed to be premium quality fluid reels. Properly positioned, a hose reel will increase productivity. Safety in the shop is enhanced because hoses are retracted when not in use and so hoses trailing across the floor are eliminated. Hose life is greatly extended since hoses are not dragged across the floor, not walked upon, nor driven over since the hose is always ready at hand and can be retracted out of the way when not in use. Hose reels can be mounted on wall, ceiling, floor or on top of tanks, benches, etc. SAMOA offers a wide range of mounting accessories to help with the installation of an individual reel or a reel bank.



COMPRESSED AIR • WATER • DIESEL • LUBRICANTS • ANTIFREEZE • WINDSHIELD WASH • GREASE • AdBlue®

**ALL SAMOA REELS HAVE**

- Superior power spring life. Special fatigue resistant steel spring guarantees long life and trouble free operation.
- Heavy duty ratchet, with large effective radial latching area for an easier and user-friendly operation.
- Metal arms, enclosures, base and spool are epoxy powder coated for increased wear resistance.
- Samoa only uses high quality hoses, specially formulated for use in hose reels, from established European manufacturers.

**ADVANTAGES OF THE USE OF HOSE REELS**

- Increased productivity.
- Reduced wear and increased life of hoses.
- Simple hose handling and storage.
- Lower risk of accidents as hose reels contribute to keep hoses out off the floor.
- Work environment improvement.

CODE	HOSE TYPE	APPLICATION
A	SBR synthetic rubber with textile braid	AIR AND WATER UP TO 20 BAR.
B	EPDM with textile braid	WINDSHIELD WASH FLUID, SOLVENTS, AND FLUIDS UP TO 20 BAR.
C	SBR synthetic rubber with one steel braid	HOT AND COLD HIGH PRESSURE WATER UP TO 150°C AND 170 BAR.
D	NBR synthetic rubber with one steel braid	OIL, AIR, WATER AND ANTIFREEZE UP TO 100 BAR WORKING PRESSURE.
E	NBR synthetic rubber with one high density steel braid	GREASE UP TO 350 BAR (1/4" I.D.), 280 BAR (3/8" I.D.) OR 240 BAR (1/2" I.D.) WORKING PRESSURE.
F	Polyurethane and PVC	AIR AND WATER UP TO 15 BAR.

NBR: Nitrile butadiene rubber.  
 SBR: Styrene butadiene rubber.  
 EPDM: Ethylene propylene M-class rubber.

Samoa offers a wide range of brackets, racks and stands for mounting hose reels. A properly installed hose reel has an inlet hose to prevent vibration transfer to the reel. A shut off valve is positioned at the inlet hose to allow the isolation of each reel for servicing purposes.

**501 SERIES DOUBLE PEDESTAL ARM HOSE REELS**

10 M OPEN TYPE HOSE REELS - 501 SERIES

501 200

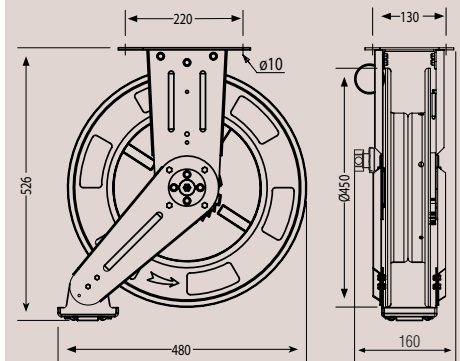


Double pedestal hose reel for air, low pressure water, medium pressure lubricants and high pressure grease. All metal arm construction, can handle up to 10 m (30') of 1/2" hose.

**Main features:**

- Brass forged shaft compatible with a wide range of fluids ensures corrosion free and leak proof operation.
- Robust all steel construction with double pedestal arm design.
- Special fatigue resistance steel spring for years of durable performance.
- Positionable outlet arm for an optimum operation in any mounting position: wall, ceiling, floor or tank.
- Epoxy powder coated for increased wear resistance.
- No special maintenance required.

**Applications:** Delivery of compressed air, low pressure water, lubricants and grease in vehicle maintenance centres, general industry, agriculture, service stations, etc.

**Dimensions (mm)**


PART No.	HOSE LENGTH	HOSE DIAMETER NOMINAL O.D. x I.D.	OUTLET THREAD	INLET THREAD	HOSE* TYPE	HOSE PRESSURE RATING	HOSE BURST PRESSURE	NET WEIGHT	WITHOUT HOSE PART No.
<b>COMPRESSED AIR AND LOW PRESSURE WATER</b>									
<b>501 100</b>	10 m - 30'	3/8" - 17 x 10 mm	R 3/8" M <sup>(2)</sup>	R 1/2" M <sup>(2)</sup>	A	20 bar - 300 psi	45 bar - 650 psi	17,9 kg	<b>501 198</b> <sup>(1)</sup>
<b>OIL, ANTIFREEZE, AIR AND WATER</b>									
<b>501 200</b>	10 m - 30'	1/2" - 18 x 12,5 mm	G 1/2" F/M <sup>(3)</sup>	G 1/2" F/M <sup>(3)</sup>	D	100 bar - 1,500 psi	400 bar - 6,000 psi	20,0 kg	<b>501 298</b> <sup>(1)</sup>
<b>GREASE</b>									
<b>501 300</b>	10 m - 30'	1/4" - 14 x 6,4 mm	R 1/4" M <sup>(2)</sup>	G 1/4" F/M <sup>(3)</sup>	E	350 bar - 5,000 psi	1.400 bar - 20,000 psi	19,2 kg	<b>501 398</b> <sup>(1)</sup>

<sup>(1)</sup> Models supplied without hose. Maximum working pressure is the minimum working pressure of the individual components used, normally the hose.

<sup>(2)</sup> Swaged male tapered threads.

<sup>(3)</sup> Swaged 60° cone nut and 60° double male adapter.

All models with hose include a 0,8 m (2.5') inlet hose.

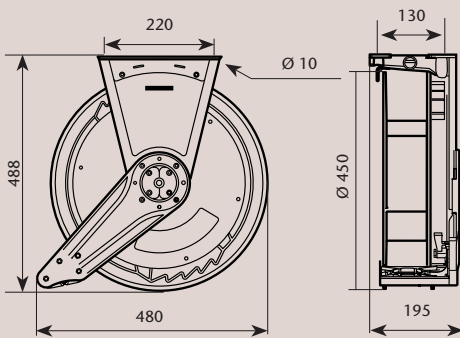
\* Hose type: See page 46.



506 202

SINGLE ALUMINIUM ARM HOSE REEL - 506 SERIES

**Applications:** Delivery of compressed air, low pressure water and fluids; medium pressure lubricants, high pressure hot and cold water and high pressure grease in vehicle maintenance centres, general industry, agriculture, service stations, marine, aviation, etc.

**Dimensions (mm)**

Aluminium and composite material single arm hose reel for air, water, oil, antifreeze, windshield wash fluid, high pressure hot and cold water and grease with hose capacity up to 15 m x 1/2" hose.

**Main features:**

- Aluminium base and guide arm provides this reel with the rigidity to withstand even the most demanding applications, whilst offering a reduced weight for easy off installation (hose reel weight with 15 m x 1/2" hose is only 14,9 kg).
- Epoxy powder coated aluminium base and arm, composite material spool and stainless steel fasteners provide superb corrosion resistance for working in damp environments.
- Nickel protected shaft and swivel for wear and corrosion resistance and wide fluid compatibility.
- Spool mounted on two permanently lubricated ball bearings for an easy pull out of the hose and better spring performance.
- Large effective radial latching area for easier operation.
- Round 6 roller hose outlet increases hose life, prevents hose pinching and reduces friction.



*Single arm design allows easy maintenance: hose replacement and ratchet and swivel inspection can be done without disassembly of the reel.*

*Additionally, power spring tension can be adjusted on-site with the system under pressure and without the need to use any tool or to remove the hose stop and control valve, regardless of the reel height and mounting position. Spring tension can be increased simply by adding hose loops to the spool and it can be decreased by removing hose loops.*

## 506 SERIES SINGLE ARM HOSE REELS. MODELS, SPECIFICATIONS AND ACCESSORIES



## HOSE REELS WITH HOSE

PART No.	HOSE LENGTH	HOSE DIAMETER NOMINAL O.D. x I.D.	OUTLET THREAD	INLET THREAD	HOSE* TYPE	HOSE PRESSURE RATING	HOSE BURST PRESSURE	NET WEIGHT
<b>COMPRESSED AIR AND LOW PRESSURE WATER</b>								
506 101	10 m - 30'	3/8" - 17 x 10 mm	R 3/8" M <sup>(1)</sup>	R 1/2" M <sup>(1)</sup>	A	20 bar - 300 psi	45 bar - 650 psi	12,1 kg
506 121	15 m - 50'	3/8" - 17 x 10 mm	R 3/8" M <sup>(1)</sup>	R 1/2" M <sup>(1)</sup>	A	20 bar - 300 psi	45 bar - 650 psi	14,2 kg
506 122	15 m - 50'	1/2" - 20 x 12,5 mm	R 1/2" M <sup>(1)</sup>	R 1/2" M <sup>(1)</sup>	A	20 bar - 300 psi	45 bar - 650 psi	14,9 kg
<b>HOT AND COLD WATER (150 °C - 300 °F MAXIMUM TEMPERATURE)</b>								
506 421	15 m - 50'	3/8" - 16 x 10 mm	G 3/8" F/M <sup>(2)</sup>	G 3/8" F/M <sup>(2)</sup>	C	170 bar - 2,500 psi	680 bar - 10,000 psi	15,1 kg
<b>OIL, ANTIFREEZE, AIR AND WATER</b>								
506 202	10 m - 30'	1/2" - 18 x 12,5 mm	G 1/2" F/M <sup>(2)</sup>	G 1/2" F/M <sup>(2)</sup>	D	100 bar - 1,500 psi	400 bar - 6,000 psi	12,6 kg
506 222	15 m - 50'	1/2" - 18 x 12,5 mm	G 1/2" F/M <sup>(2)</sup>	G 1/2" F/M <sup>(2)</sup>	D	100 bar - 1,500 psi	400 bar - 6,000 psi	14,9 kg
506 212	18 m - 60'	1/2" - 18 x 12,5 mm	G 1/2" F/M <sup>(2)</sup>	G 1/2" F/M <sup>(2)</sup>	D	100 bar - 1,500 psi	400 bar - 6,000 psi	15,7 kg
<b>WASTE OIL SUCTION</b>								
506 503	6 m - 20'	5/8" - 23 x 16 mm	G 1/2" F/M <sup>(2)</sup>	G 1/2" FM <sup>(2)</sup>	D	100 bar - 1,500 psi	400 bar - 6,000 psi	13,3 kg
<b>WINDSHIELD WASH AND DEGREASERS (STAINLESS STEEL SHAFT AND SWIVEL)</b>								
506 602	10 m - 30'	1/2" - 21 x 12,5 mm	G 1/2" F/M <sup>(2)</sup>	G 1/2" F/M <sup>(2)</sup>	B	20 bar - 300 psi	80 bar - 1,200 psi	13,0 kg
506 622	15 m - 50'	1/2" - 21 x 12,5 mm	G 1/2" F/M <sup>(2)</sup>	G 1/2" F/M <sup>(2)</sup>	B	20 bar - 300 psi	80 bar - 1,200 psi	15,5 kg
<b>GREASE</b>								
506 300	10 m - 30'	1/4" - 14 x 6,4 mm	R 1/4" M <sup>(1)</sup>	G 1/4" F/M <sup>(2)</sup>	E	350 bar - 5,000 psi	1.400 bar - 20,000 psi	12,4 kg
506 301	10 m - 30'	3/8" - 17 x 10 mm	R 1/4" M <sup>(1)</sup>	G 3/8" H/M <sup>(2)</sup>	E	280 bar - 4,000 psi	1.120 bar - 16,000 psi	12,9 kg
506 321	15 m - 50'	3/8" - 17 x 10 mm	R 1/4" M <sup>(1)</sup>	G 3/8" F/M <sup>(2)</sup>	E	280 bar - 4,000 psi	1.120 bar - 16,000 psi	16,0 kg
506 311	18 m - 60'	3/8" - 17 x 10 mm	R 1/4" M <sup>(1)</sup>	G 3/8" F/M <sup>(2)</sup>	E	280 bar - 4,000 psi	1.120 bar - 16,000 psi	17,0 kg
<b>ADBLUE® (DEF)</b>								
506 702	10 m - 30'	1/2" - 21 x 12,5 mm	G 1/2" F/M <sup>(2)</sup>	G 1/2" F/M <sup>(2)</sup>	B	20 bar - 300 psi	80 bar - 1,200 psi	13,0 kg
506 722	15 m - 50'	1/2" - 21 x 12,5 mm	G 1/2" F/M <sup>(2)</sup>	G 1/2" F/M <sup>(2)</sup>	B	20 bar - 300 psi	80 bar - 1,200 psi	15,5 kg

(1) Swaged male tapered threads.

(2) Swaged 60° cone nut and 60° double male adaptor.

Models with 18 m - 60' of hose should be used in installations allowing a minimum of 3 m - 10' of fluid hose hanging from the reel, and never with the hose totally coiled inside the reel. All models with hose include a 0,8 m (2.5') inlet hose.

\* Hose type: See page 46.

## HOSE REELS WITH NO HOSE

Hose reels do not include hose, hose stop and U-bolt. See hose reel accessories for hose stoppers, U-bolts and connection adapters.

PART No.	APPLICATION	MAXIMUM HOSE CAPACITY	SWIVEL CONNECTION THREAD	SHAFT CONNECTION THREAD	MAXIMUM WORKING PRESSURE <sup>(2)</sup>
506 000	LOW AND MEDIUM PRESSURE AIR, WATER, ANTIFREEZE AND COOLANT SOLUTIONS, LUBRICANTS	10 m x 1/2" or 10 m x 3/8"	1/2" NPT (F)	1/2" BSP (M)	200 bar - 3,000 psi
506 002		15 m x 1/2" or 15 m x 3/8"	1/2" NPT (F)	1/2" BSP (M)	200 bar - 3,000 psi
506 001		18 m x 1/2" (1)	1/2" NPT (F)	1/2" BSP (M)	200 bar - 3,000 psi
506 030	HIGH PRESSURE GREASE	10 m x 3/8" or 10 m x 1/4"	3/8" NPT (F)	3/8" BSP (M)	400 bar - 6,000 psi
506 032		15 m x 3/8" or 15 m x 1/4"	3/8" NPT (F)	3/8" BSP (M)	400 bar - 6,000 psi
506 031		18 m x 3/8" (1)	3/8" NPT (F)	3/8" BSP (M)	400 bar - 6,000 psi
506 042	HIGH PRESSURE WATER	15 m x 3/8"	1/2" NPT (F)	1/2" BSP (M)	180 bar - 2,700 psi
506 060	WINDSHIELD WASH, DEGREASERS	10 m x 1/2"	1/2" NPT (F)	1/2" BSP (M)	200 bar - 3,000 psi
506 062		15 m x 1/2"	1/2" NPT (F)	1/2" BSP (M)	200 bar - 3,000 psi

(1) Models for 18 m shall be used in installations allowing a minimum of 3 m of fluid hose hanging from the reel and never with the hose totally coiled inside the reel.

(2) Bare reel working pressure. Maximum application pressure must not exceed the minimum of reel and installed hose working pressures.

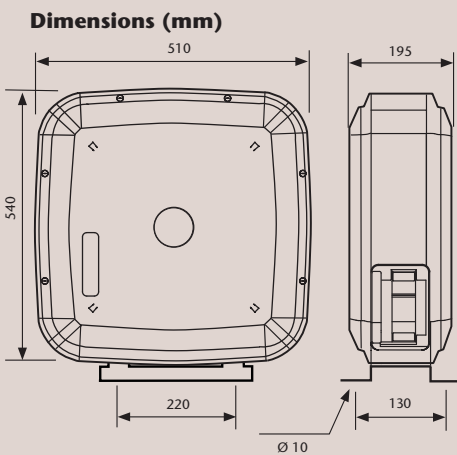
## ACCESSORIES

**HOSE STOP, U-BOLT KITS AND CONNECTION ADAPTERS SEE 507 SERIES REEL ACCESSORIES**

507 202

INDIVIDUALLY ENCLOSED REELS - 507 SERIES

**Applications:** Delivery of compressed air, low pressure water and fluids, medium pressure lubricants, high pressure hot and cold water and high pressure grease in vehicle maintenance centres, general industry, agriculture, service stations, marine, aviation, etc.



Very robust individually enclosed reel with extra hose capacity. It can be used with air, water, antifreeze, windshield wash solutions, lubricants and grease. Hose capacity 10, 15 and 18 m of 1/2" hose.

**Main features:**

- Corrosion resistant aluminum shield forms a very rigid and light weight structure with attractive design.
- Full port nickel protected steel shaft and shaft for wear and corrosion resistance and wide fluid compatibility. Reel for fluids (windshield wash solutions, degreasers, etc.) and high pressure water, have stainless steel shaft and swivel.
- Spool mounted on two permanent lubricated sealed ball bearings to reduce torque load on power spring for smooth operation and durability.
- Large effective radial latching area for easier operation.
- Special fatigue resistance steel spring for years of durable performance.
- Positionable mounting brackets for optimum operation in any mounting position: wall, ceiling, floor or tank.
- Epoxy powder coated for increased wear resistance.
- Very easy maintenance thanks to two wide lateral service windows.



*Easy maintenance and service. Removing one of the side panels provides full access for swivel inspection, hose replacement or power spring load adjustment. Removing the other side panel provides full access to the ratchet mechanism. Any maintenance activity can be done without dismounting the reel from its position.*



*Spool mounted on ball bearings. The spool is mounted on two permanently lubricated ball bearings providing a smooth and comfortable hose extraction. Bearings provide optimal hose retraction even in the most demanding situations.*

## 507 SERIES INDIVIDUALLY ENCLOSED REELS. MODELS, SPECIFICATIONS AND ACCESSORIES



## HOSE REELS WITH HOSE

PART No.	HOSE LENGTH	HOSE Ø NOMINAL O.D. x I.D.	OUTLET THREAD	INLET THREAD	HOSE* TYPE	HOSE PRESSURE RATING	HOSE BURST PRESSURE	NET WEIGHT
<b>COMPRESSED AIR AND LOW PRESSURE WATER</b>								
<b>507 101</b>	10 m - 30'	3/8" - 17 x 10 mm	R 3/8" M <sup>(1)</sup>	R 1/2" M <sup>(1)</sup>	<b>A</b>	20 bar - 300 psi	45 bar - 650 psi	18,4 kg
<b>507 121</b>	15 m - 50'	3/8" - 17 x 10 mm	R 3/8" M <sup>(1)</sup>	R 1/2" M <sup>(1)</sup>	<b>A</b>	20 bar - 300 psi	45 bar - 650 psi	20,7 kg
<b>507 122</b>	15 m - 50'	1/2" - 20 x 12,5 mm	R 1/2" M <sup>(1)</sup>	R 1/2" M <sup>(1)</sup>	<b>A</b>	20 bar - 300 psi	45 bar - 650 psi	21,4 kg
<b>HOT AND COLD WATER (150 °C - 300 °F MAXIMUM TEMPERATURE)</b>								
<b>507 421</b>	15 m - 50'	3/8" - 16 x 10 mm	G 3/8" F/M <sup>(2)</sup>	G 3/8" F/M <sup>(2)</sup>	<b>C</b>	170 bar - 2,500 psi	680 bar - 10,000 psi	22,2 kg
<b>OIL, ANTIFREEZE, AIR AND WATER</b>								
<b>507 202</b>	10 m - 30'	1/2" - 18 x 12,5 mm	G 1/2" F/M <sup>(2)</sup>	G 1/2" F/M <sup>(2)</sup>	<b>D</b>	100 bar - 1,500 psi	400 bar - 6,000 psi	18,9 kg
<b>507 222</b>	15 m - 50'	1/2" - 18 x 12,5 mm	G 1/2" F/M <sup>(2)</sup>	G 1/2" F/M <sup>(2)</sup>	<b>D</b>	100 bar - 1,500 psi	400 bar - 6,000 psi	21,4 kg
<b>507 212</b>	18 m - 60'	1/2" - 18 x 12,5 mm	G 1/2" F/M <sup>(2)</sup>	G 1/2" F/M <sup>(2)</sup>	<b>D</b>	100 bar - 1,500 psi	400 bar - 6,000 psi	22,2 kg
<b>WASTE OIL SUCTION</b>								
<b>507 503</b>	6 m - 20'	5/8" - 23 x 16 mm	G 1/2" F/M <sup>(2)</sup>	G 1/2" FM <sup>(2)</sup>	<b>D</b>	100 bar - 1.500 psi	400 bar - 6.000 psi	19,1 kg
<b>WINDSHIELD WASH AND DEGREASERS (STAINLESS STEEL SHAFT AND SWIVEL)</b>								
<b>507 602</b>	10 m - 30'	1/2" - 21 x 12,5 mm	G 1/2" F/M <sup>(2)</sup>	G 1/2" F/M <sup>(2)</sup>	<b>B</b>	20 bar - 300 psi	80 bar - 1,200 psi	19 kg
<b>507 622</b>	15 m - 50'	1/2" - 21 x 12,5 mm	G 1/2" F/M <sup>(2)</sup>	G 1/2" F/M <sup>(2)</sup>	<b>B</b>	20 bar - 300 psi	80 bar - 1,200 psi	21,5 kg
<b>GREASE</b>								
<b>507 300</b>	10 m - 30'	1/4" - 14 x 6,4 mm	R 1/4" M <sup>(1)</sup>	G 1/4" F/M <sup>(2)</sup>	<b>E</b>	350 bar - 5,000 psi	1.400 bar - 20,000 psi	18,8 kg
<b>507 301</b>	10 m - 30'	3/8" - 17 x 10 mm	R 1/4" M <sup>(1)</sup>	G 3/8" H/M <sup>(2)</sup>	<b>E</b>	280 bar - 4,000 psi	1.120 bar - 16,000 psi	19,5 kg
<b>507 321</b>	15 m - 50'	3/8" - 17 x 10 mm	R 1/4" M <sup>(1)</sup>	G 3/8" F/M <sup>(2)</sup>	<b>E</b>	280 bar - 4,000 psi	1.120 bar - 16,000 psi	22,6 kg
<b>507 311</b>	18 m - 60'	3/8" - 17 x 10 mm	R 1/4" M <sup>(1)</sup>	G 3/8" F/M <sup>(2)</sup>	<b>E</b>	280 bar - 4,000 psi	1.120 bar - 16,000 psi	23,5 kg

(1) Swaged male tapered threads. (2) Swaged 60° cone nut and 60° double male adaptor.

Models with 18 m - 60' of hose should be used in installations allowing a minimum of 3 m - 10' of fluid hose hanging from the reel, and never with the hose totally coiled inside the reel. All models with hose include a 0,8 m - (2.5') inlet hose. \* Hose type: See page 46.

## HOSE REELS WITH NO HOSE

Hose reels do not include hose, hose stop and U-bolt. See hose reel accessories for hose stoppers, U-bolts and connection adapters.

PART No.	APPLICATION	MAX. HOSE CAPACITY	SWIVEL CONNECTION THREAD	SHAFT CONNECTION THREAD	MAX. WORKING PRESSURE <sup>(2)</sup>
<b>507 000</b>	LOW AND MEDIUM PRESSURE AIR, WATER, ANTIFREEZE AND COOLANT SOLUTIONS, LUBRICANTS	10 m x 1/2" or 10 m x 3/8"	1/2" NPT (F)	1/2" BSP (M)	200 bar - 3,000 psi
<b>507 002</b>		15 m x 1/2" or 15 m x 3/8"	1/2" NPT (F)	1/2" BSP (M)	200 bar - 3,000 psi
<b>507 001</b>		18 m x 1/2" <sup>(1)</sup>	1/2" NPT (F)	1/2" BSP (M)	200 bar - 3,000 psi
<b>507 030</b>	HIGH PRESSURE GREASE	10 m x 3/8" or 10 m x 1/4"	3/8" NPT (F)	3/8" BSP (M)	400 bar - 6,000 psi
<b>507 032</b>		15 m x 3/8" or 15 m x 1/4"	3/8" NPT (F)	3/8" BSP (M)	400 bar - 6,000 psi
<b>507 031</b>		18 m x 3/8" <sup>(1)</sup>	3/8" NPT (F)	3/8" BSP (M)	400 bar - 6,000 psi
<b>507 042</b>	HIGH PRESSURE WATER	15 m x 3/8"	1/2" NPT (F)	1/2" BSP (M)	180 bar - 2,700 psi
<b>507 060</b>	LOW PRESSURE WINDSHIELD WASH, DEGREASERS	10 m x 1/2"	1/2" NPT (F)	1/2" BSP (M)	200 bar - 3,000 psi
<b>507 062</b>		15 m x 1/2"	1/2" NPT (F)	1/2" BSP (M)	200 bar - 3,000 psi

(1) Models for 18 m shall be used in installations allowing a minimum of 3 m of fluid hose hanging from the reel and never with the hose totally coiled inside the reel.

(2) Bare reel working pressure. Maximum application pressure must not exceed the minimum of reel and installed hose working pressures.

## ACCESSORIES

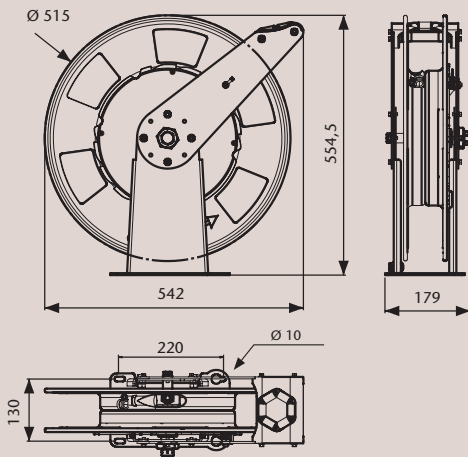
<b>HOSE STOP AND U-BOLT KITS</b>	
<b>526 001</b>	HOSE STOP AND U-BOLT KIT. FOR HOSE WITH 18,1 / 17,0 MM, MAX. / MIN. OUTSIDE DIAMETER
<b>526 002</b>	HOSE STOP AND U-BOLT KIT. FOR HOSE WITH 21,5 / 20,0 MM, MAX. / MIN. OUTSIDE DIAMETER
<b>526 004</b>	HOSE STOP AND U-BOLT KIT. FOR HOSE WITH 15.7 / 15,0 MM, MAX. / MIN. OUTSIDE DIAMETER
<b>STRAIGHT ADAPTERS</b>	
<b>945 593</b>	1/2" NPT (M) - 1/2" BSP (M). CONNECTION ADAPTOR
<b>945 676</b>	3/8" NPT (M) - 3/8" BSP (M). CONNECTION ADAPTOR
<b>COMPACT 90° SWIVELLING ADAPTERS</b>	
<b>945 714</b>	1/2" BSP (FF) 90° SWIVELLING ADAPTOR
<b>945 713</b>	3/8" BSP (FF) 90° SWIVELLING ADAPTOR

504 250

15 M OPEN TYPE HOSE REELS - 504 SERIES

**Applications:** Delivery of compressed air, low and high pressure water, lubricants and grease in vehicle maintenance centres, field service units and lubrication trucks, mining, construction, general industry, agriculture, service stations, etc.

#### Dimensions (mm)



Heavy Duty reinforced double pedestal reel with all metal construction. It can be used with air, water, antifreeze, windshield wash solutions, lubricants and grease. Hose capacity 15 and 18 m of 1/2" hose.

#### Main features:

- Heavy Duty full metal double pedestal reel, manufactured using 4 mm steel gauge. The base, shaft assembly and outlet mouth form a very rigid and stable structure to stand the most demanding applications.
- Full port nickel protected steel shaft and shaft for wear and corrosion resistance and wide fluid compatibility. Reel for high pressure water, has stainless steel shaft and swivel.
- Spool mounted on two permanent lubricated sealed ball bearings to reduce torque load on power spring for smooth operation and durability.
- Large effective radial latching area for easier operation.
- Exclusive 6 roller aluminium die cast hose outlet increases hose life, prevents hose pinching and reduces friction.
- Special fatigue resistance steel spring for years of durable performance.
- Positionable outlet mouth in seven positions for optimum operation in any mounting position: wall, ceiling, floor or tank.
- Epoxy powder coated for increased wear resistance.
- Very easy maintenance.



*Arm on the swivel side can be easily removed to facilitate hose reel service and maintenance as well as to adjust power spring tension.*

*The base, shaft assembly and outlet mouth form a very rigid and stable structure to stand the most demanding applications.*



## 504 SERIES DOUBLE PEDESTAL ARM HOSE REELS. MODELS, SPECIFICATIONS AND ACCESSORIES



## HOSE REELS WITH HOSE

PART No.	HOSE LENGTH	HOSE DIAMETER NOMINAL - O.D. x I.D.	OUTLET THREAD	INLET THREAD	HOSE* TYPE	HOSE PRESSURE RATING	HOSE BURST PRESSURE	NET WEIGHT
<b>COMPRESSED AIR AND LOW PRESSURE WATER</b>								
<b>504 150</b>	15 m - 50'	1/2" - 20 x 12,5 mm	R 1/2" M <sup>(1)</sup>	R 1/2" F/M <sup>(2)</sup>	<b>A</b>	20 bar - 300 psi	45 bar - 650 psi	27 kg
<b>HOT AND COLD WATER 150 °C - 300 °F MAXIMUM TEMPERATURE</b>								
<b>504 450</b>	15 m - 50'	3/8" - 16 x 10 mm	R 3/8" M <sup>(2)</sup>	R 1/2" F/M <sup>(2)</sup>	<b>C</b>	170 bar - 2,500 psi	680 bar - 10,000 psi	28 kg
<b>OIL, ANTIFREEZE, AIR AND WATER</b>								
<b>504 250</b>	15 m - 50'	1/2" - 18 x 12,5 mm	R 1/2" F/M <sup>(2)</sup>	R 1/2" F/M <sup>(2)</sup>	<b>D</b>	100 bar - 1,500 psi	400 bar - 6,000 psi	27,5 kg
<b>GREASE</b>								
<b>504 350</b>	15 m - 50'	1/4" - 14 x 6,4 mm	R 1/4" M <sup>(1)</sup>	G 1/4" F/M <sup>(2)</sup>	<b>E</b>	350 bar - 5,000 psi	1.400 bar - 20,000 psi	27,5 kg
<b>504 351</b>	15 m - 50'	3/8" - 17 x 10 mm	R 1/4" M <sup>(1)</sup>	G 3/8" F/M <sup>(2)</sup>	<b>E</b>	280 bar - 4,000 psi	1.120 bar - 16,000 psi	28,5 kg

(1) Swaged male tapered threads.

(2) Swaged 60° cone nut and 60° double thread male adapter.

All models with hose include a 0,8 m (2.5') inlet hose.

\* Hose type: See page 46.

## HOSE REELS WITH NO HOSE

Hose reels do not include hose, hose stop and U-bolt. See hose reel accessories for hose stoppers, U-bolts and connection adapters.

PART No.	APPLICATION	MAXIMUM HOSE CAPACITY	SWIVEL CONNECTION THREAD	SHAFT CONNECTION THREAD	MAX. WORKING PRESSURE <sup>(2)</sup>
<b>504 158</b>	LOW AND MEDIUM PRESSURE AIR, WATER, ANTIFREEZE AND COOLANT SOLUTIONS, LUBRICANTS	15 m x 1/2"	1/2" NPT (F)	1/2" BSP (M)	200 bar - 3,000 psi
<b>504 157</b>		18 m x 1/2" <sup>(1)</sup>	1/2" NPT (F)	1/2" BSP (M)	200 bar - 3,000 psi
<b>504 358</b>	HIGH PRESSURE GREASE	15 m x 3/8"	3/8" NPT (F)	3/8" BSP (M)	400 bar - 6,000 psi
<b>504 357</b>		18 m x 3/8" <sup>(1)</sup>	3/8" NPT (F)	3/8" BSP (M)	400 bar - 6,000 psi
<b>504 458</b>	HIGH PRESSURE WATER	15 m x 3/8"	1/2" NPT (F)	1/2" BSP (M)	180 bar - 2,700 psi

(1) Models for 18 m shall be used in installations allowing a minimum of 3 m of fluid hose hanging from the reel and never with the hose totally coiled inside the reel.

(2) Bare reel working pressure. Maximum application pressure must not exceed the minimum of reel and installed hose working pressures.

## ACCESSORIES

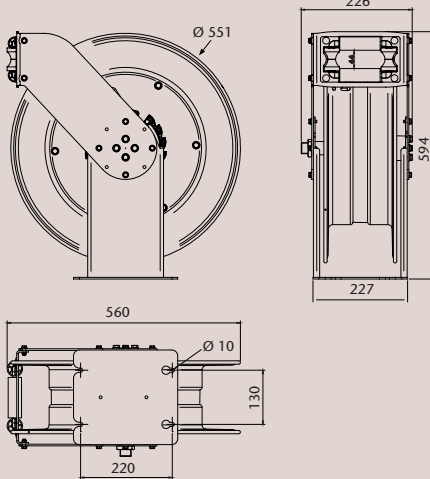
<b>HOSE STOP AND U-BOLT KITS</b>	
<b>526 001</b>	HOSE STOP AND U-BOLT KIT. FOR HOSE WITH 18,1 / 17,0 MM, MAX. / MIN. OUTSIDE DIAMETER
<b>526 002</b>	HOSE STOP AND U-BOLT KIT. FOR HOSE WITH 21,5 / 20,0 MM, MAX. / MIN. OUTSIDE DIAMETER
<b>526 004</b>	HOSE STOP AND U-BOLT KIT. FOR HOSE WITH 15.7 / 15,0 MM, MAX. / MIN. OUTSIDE DIAMETER
<b>STRAIGHT ADAPTERS</b>	
<b>945 593</b>	1/2" NPT (M) - 1/2" BSP (M). CONNECTION ADAPTOR
<b>945 676</b>	3/8" NPT (M) - 3/8" BSP (M). CONNECTION ADAPTOR
<b>COMPACT 90° SWIVELLING ADAPTERS</b>	
<b>945 714</b>	1/2" BSP (FF) 90° SWIVELLING ADAPTOR
<b>945 713</b>	3/8" BSP (FF) 90° SWIVELLING ADAPTOR

505 224

DOUBLE PEDESTAL ARM HOSE REEL - 505 SERIES

**Applications:** Delivery of low pressure air, water, AdBlue® (DEF), diesel, medium pressure lubricants and high pressure grease in vehicle maintenance centres, field service units and lubrication trucks, mining, construction, general industry, agriculture, etc.

#### Dimensions (mm)



Heavy Duty reinforced double pedestal reel with all metal construction. It can be used with air, water, antifreeze, AdBlue® (DEF), lubricants, diesel and high pressure grease. Hose capacity 15 m of 3/4" hose or 20 m of 1/2" hose.

#### Main features:

- Heavy Duty full metal double pedestal reel, manufactured using 4 mm steel gauge. The base, shaft assembly and outlet mouth form a very rigid and stable structure to stand the most demanding applications.
- Full port nickel protected steel shaft and shaft for wear and corrosion resistance and wide fluid compatibility. Reel for AdBlue® (DEF), has stainless steel shaft and acetal swivel with FKM seals.
- Spool mounted on two permanent lubricated sealed ball bearings to reduce torque load on power spring for smooth operation and durability.
- Large effective radial latching area for easier operation.
- Special fatigue resistance steel spring for years of durable performance.
- Positionable outlet mouth in seven positions for optimum operation in any mounting position: wall, ceiling, floor or tank.
- Epoxy powder coated for increased wear resistance.



*The base, shaft assembly and outlet mouth form a very rigid and stable structure to stand the most demanding applications.*

## 505 SERIES DOUBLE PEDESTAL ARM FULL METAL HOSE REELS. MODELS, SPECIFICATIONS AND ACCESSORIES



## HOSE REELS WITH HOSE

PART No.	HOSE LENGTH	HOSE DIAMETER NOMINAL - O.D. x I.D.	OUTLET THREAD	INLET THREAD	HOSE* TYPE	HOSE PRESSURE RATING	HOSE BURST PRESSURE	NET WEIGHT
<b>LOW AND MEDIUM PRESSURE AIR, WATER, DIESEL AND LUBRICANTS</b>								
<b>505 232</b>	20 m - 65'	1/2" - 20,0 x 12,0 mm	R 1/2" (M)	G 3/4" (F) <sup>(2)</sup>	<b>D</b>	100 bar - 1,500 psi	400 bar - 6,000 psi	36 kg
<b>505 224</b>	15 m - 50'	3/4" - 27,7 x 19,0 mm	R 3/4" (M) <sup>(1)</sup>	G 3/4" (F) <sup>(2)</sup>	<b>D</b>	100 bar - 1,500 psi	400 bar - 6,000 psi	38 kg
<b>HIGH PRESSURE GREASE</b>								
<b>505 332</b>	20 m - 65'	1/2" - 12,7 x 20,1 mm	R 1/2" (M) <sup>(1)</sup>	G 1/2" (F) <sup>(2)</sup>	<b>E</b>	240 bar - 3,500 psi	960 bar - 13,900 psi	38,5 kg
<b>ADBLUE® (DEF)</b>								
<b>505 524</b>	15 m - 50"	3/4" - 19 x 29 mm	R 3/4" (F) <sup>(2)</sup>	G 3/4" (F) <sup>(2)</sup>	<b>B</b>	20 bar - 290 psi	60 bar - 870 psi	39 kg

(1) Swaged 60° cone nut and 60° double thread male adaptor.

(2) Swaged 60° cone nut.

All models with hose include a 0,8 m (2.5') inlet hose.

\* Hose type: See page 46.

## HOSE REELS WITH NO HOSE

Hose reels do not include hose, hose stop and U-bolt. See hose reel accessories for hose stoppers, U-bolts and connection adapters.

PART No.	APPLICATION	MAXIMUM HOSE CAPACITY	SWIVEL CONNECTION THREAD	SHAFT CONNECTION THREAD	MAX WORKING PRESSURE <sup>(1)</sup>
<b>505 002</b>	LOW AND MEDIUM PRESSURE AIR, WATER, ANTIFREEZE, LUBRICANTS, DIESEL	15 m x 3/4" or 20 m x 1/2"	3/4" NPT (F)	3/4" BSP (M)	110 bar - 1,600 psi
<b>505 014</b>	HIGH PRESSURE GREASE	20 m x 1/2"	1/2" NPT (F)	1/2" BSP (M)	350 bar - 5,250 psi
<b>505 502</b>	LOW PRESSURE ADBLUE® (DEF)	15 m x 3/4"	3/4" BSP (F)	3/4" BSP (M)	110 bar - 1,600 psi

(1) Bare reel working pressure. Maximum application pressure must not exceed the minimum of reel and installed hose working pressures.

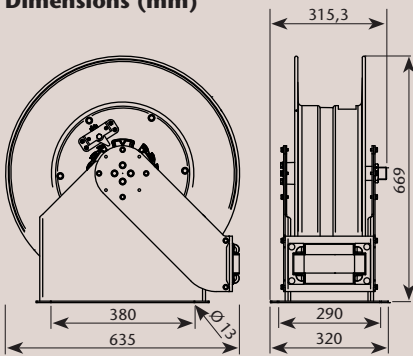
## ACCESSORIES

<b>HOSE STOP AND U-BOLT KITS</b>	
<b>528 002</b>	HOSE STOP AND U-BOLT KIT. FOR 3/4" HOSE
<b>528 004</b>	HOSE STOP AND U-BOLT KIT. FOR 1/2" HOSE
<b>STRAIGHT ADAPTERS</b>	
<b>945 675</b>	3/4" NPT (M) - 3/4" BSP (M). CONNECTION ADAPTOR
<b>945 674</b>	3/4" NPT (M) - 1/2" BSP (M). CONNECTION ADAPTOR
<b>COMPACT 90° SWIVELLING ADAPTERS</b>	
<b>945 715</b>	3/4" BSP (FF) 90° SWIVELLING ADAPTOR
<b>945 717</b>	3/4" BSP (F) - 1/2" BSP (F) 90° SWIVELLING ADAPTOR

508 225

HEAVY DUTY HIGH DELIVERY REELS - 508 SERIES

**Applications:** High volume delivery of water, lubricants, waste oil evacuation and diesel in vehicle maintenance centres, field service units and lubrication trucks, mining, construction, general industry, agriculture, etc.

**Dimensions (mm)**

Extremely robust high delivery (up to 15 m x 1" hose) and high hose capacity (up to 30 m x 1/2" hose) all metal construction hose reel. It can be used with low pressure air, water, diesel, antifreeze, medium pressure lubricants and for waste oil evacuation.

**Main features:**

- Heavy Duty very robust all metal construction. Manufactured using 4 mm steel gauge, the wide base arms, shaft and outlet arms form a very rigid and stable structure to stand the most demanding applications.
- Full port 1" nickel protected shaft and swivel for no flow restriction contributes to reduce fill time and to improve efficiency.
- Spool mounted on two permanent lubricated ball bearings to reduce torque load on power spring for smooth operation and durability.
- Large, effective radial latching area for easier operation.
- Zinc plated steel rollers for maximum durability.
- Epoxy powder coated for increased wear resistance.
- Outlet arm can be mounted in 6 different positions for maximum mounting versatility in any mounting position.



*The base, shaft assembly and outlet mouth form a very rigid and stable structure to stand the most demanding applications.*



## 508 SERIES HEAVY DUTY HIGH DELIVERY REELS MODELS, SPECIFICATIONS AND ACCESSORIES



## HOSE REELS WITH HOSE

PART No.	HOSE LENGTH	HOSE DIAMETER NOMINAL - O.D. x I.D.	OUTLET THREAD	INLET THREAD	HOSE* TYPE	HOSE PRESSURE RATING	HOSE BURST PRESSURE	NET WEIGHT
<b>LOW PRESSURE AIR, WATER, DIESEL</b>								
<b>508 125</b>	15 m - 50'	1" - 34,4 x 25,4 mm	G 1" (F) <sup>(1)</sup>	G 1" (F) <sup>(1)</sup>	<b>A</b>	25 bar - 360 psi	100 bar - 1,450 psi	50 kg
<b>508 152</b>	30 m - 100'	1/2" - 19,7 x 12 mm	G 1/2" (F) <sup>(1)</sup>	G 1" (F) <sup>(1)</sup>	<b>A</b>	28 bar - 400 psi	112 bar - 1,600 psi	55 kg
<b>MEDIUM PRESSURE LUBRICANTS, WATER</b>								
<b>508 225</b>	15 m - 50'	1" - 35,6 x 25,4 mm	G 1" (F) <sup>(1)</sup>	G 1" (F) <sup>(1)</sup>	<b>D</b>	90 bar - 1,250 psi	360 bar - 5,000 psi	56 kg
<b>508 234</b>	20 m - 65'	3/4" - 27,7 x 19 mm	G 3/4" (F) <sup>(1)</sup>	G 1" (F) <sup>(1)</sup>	<b>D</b>	100 bar - 1,500 psi	400 bar - 6,000 psi	55 kg
<b>508 244</b>	25 m - 80'	3/4" - 27,7 x 19 mm	G 3/4" (F) <sup>(1)</sup>	G 1" (F) <sup>(1)</sup>	<b>D</b>	100 bar - 1,500 psi	400 bar - 6,000 psi	57 kg
<b>508 252</b>	30 m - 100'	1/2" - 20 x 12 mm	G 1/2" (F) <sup>(1)</sup>	G 1" (F) <sup>(1)</sup>	<b>D</b>	140 bar - 2,000 psi	550 bar - 8,000 psi	55 kg

(1) Swaged 60° cone nut

All models with hose include a 0,8 m (2.5') inlet hose.

\* Hose type: See page 46.

## HOSE REELS WITH NO HOSE

Hose reels do not include hose, hose stop and U-bolt. See hose reel accessories for hose stoppers, U-bolts and connection adapters.

PART No.	APPLICATION	MAXIMUM HOSE CAPACITY	SWIVEL CONNECTION THREAD	SHAFT CONNECTION THREAD	MAX. WORKING PRESSURE <sup>(1)</sup>
<b>508 002</b>	LOW AND MEDIUM PRESSURE AIR, WATER, ANTIFREEZE AND COOLANT SOLUTIONS, LUBRICANTS, DIESEL, WASTE OIL EXTRACTION	15 m x 1" or 20 m x 3/4"	1" NPT (F)	1" BSP (M)	110 bar -1,600 psi
<b>508 004</b>	LOW AND MEDIUM PRESSURE AIR, WATER, ANTIFREEZE AND COOLANT SOLUTIONS, LUBRICANTS, DIESEL	25 m x 3/4" or 30 m x 1/2"	1" NPT (F)	1" BSP (M)	110 bar -1,600 psi

(1) Bare reel working pressure. Maximum application pressure must not exceed the minimum of reel and installed hose working pressures.

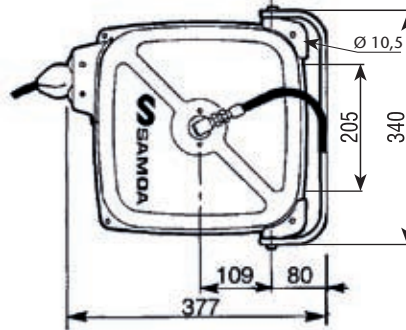
## ACCESSORIES

<b>HOSE STOP AND U-BOLT KITS</b>	
<b>528 001</b>	HOSE STOP AND U-BOLT KIT. FOR 1" HOSE
<b>528 002</b>	HOSE STOP AND U-BOLT KIT. FOR 3/4" HOSE
<b>528 004</b>	HOSE STOP AND U-BOLT KIT. FOR 1/2" HOSE
<b>STRAIGHT ADAPTERS</b>	
<b>945 719</b>	1" NPT (M) - 1" BSP (M). CONNECTION ADAPTOR
<b>945 599</b>	1" NPT (M) - 3/4" BSP (M). CONNECTION ADAPTOR
<b>COMPACT 90° SWIVELLING ADAPTERS</b>	
<b>945 716</b>	1" BSP (FF) 90° SWIVELLING ADAPTOR
<b>945 720</b>	1" BSP (F) - 3/4" BSP (F) 90° SWIVELLING ADAPTOR

500 115

COMPACT REELS FOR AIR

Compact enclosed reels for air, manufactured in steel. All reels include pivoting wall bracket for an easy and convenient installation. Reels include polyurethane and PVC hose with a maximum working pressure of 15 bar (285 psi)



#### 500 115 Compact hose reel for air 15 m x 8 mm hose

Compact reel for air and water with 15 m x 8 mm hose. Includes 0.8 m inlet hose and pivoting bracket. Inlet thread: 3/8" BSP (M). Outlet thread: 1/4" BSP (M).

#### 500 116 Compact hose reel for air 12 m x 10 mm hose

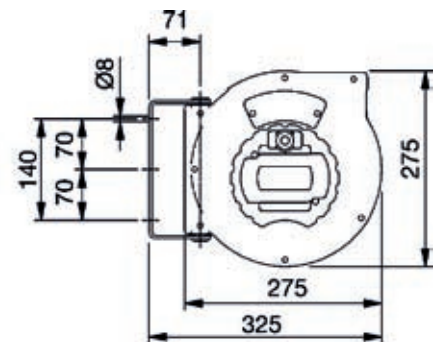
Compact reel for air and water with 12 m x 10 mm hose. Includes 0.8 m inlet hose and pivoting bracket. Inlet thread: 3/8" BSP (M). Outlet thread: 3/8" BSP (M).

612 100 - 612 300

CABLE REELS

Compact reels with high resistance thermoplastic enclosure. Compact design, with wide outlet for a comfortable friction free cable extension. All reels include pivoting bracket, cable specified for each model, and cable overload breaker.

For use with 230 V – 50 Hz only.



#### 612 100 - 230 V, 50 Hz cable reel

Includes 15 m H05VV-F 3x1,5 mm<sup>2</sup> cable, 230 V - 50 Hz. Maximum power: 800 W with the cable coiled and 2.000 W with the cable fully extended because of hot disipation.

#### 612 200 - 230 V, 50 Hz cable reel with 230 V AC to 24 V DC transformer

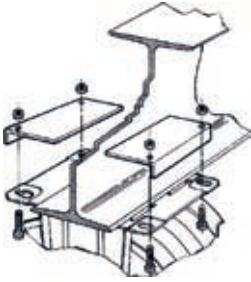
Includes 15 m H05VV-F 2x1 mm<sup>2</sup> cable. Maximum power: 60 W Includes a 230 V AC to 24 V DC transformer. For use with an E27 24 V - DC lamp (lamp not included).

#### 612 300 - 230 V, 50 Hz cable reel with 230 V AC to 12 V DC transformer

Includes 15 m H05VV-F 2x1 mm<sup>2</sup> cable. Maximum power: 60 W Includes a 230 V AC to 12 V DC transformer. For use with an E27 12 V - DC lamp (inspection lamp included, bulb not included).

## HOSE REEL MOUNTING ACCESSORIES

360 116



360 119



360 111



## WALL AND CEILING MOUNTING ACCESSORIES\*

**360 116****HOSE REEL BEAM BRACKET**

To hang an open reel 501 or 504 SERIES or an enclosed reel 507 SERIES from an «I» beam with flange width from 100 to 175 mm. Nuts and bolts included.

**360 119****FAST MOUNT BRACKET**

Facilitates mounting one reel to a wall or ceiling. Use with any Samoa reel.

**360 111****PIVOTING WALL MOUNT BRACKET**

For open type hose reels (501, 504 and 506 SERIES) and individually enclosed reels (507 SERIES).

**HOSE REEL BRACKETS FOR 205 L TROLLEYS**

To mount hose reels to trolleys. 432 814 and 432 000.

**360 113** For trolley 432 814

**360 135** For trolley 432 000

**WALL AND CEILING MOUNTING ACCESSORIES****REEL MOUNTING CHANNELS**

For mounting a reel bank to the ceiling or wall.

**360 114** For mounting a two reel bank. 550 x 308 mm.

**360 115** For mounting a three reel bank. 825 x 308 mm.

**360 117** For mounting a five reel bank. 1.375 x 308 mm.

**360 118** Secures a reel bank bracket to an I-beam (minimum /maximum I-beam width; 100 / 175 mm) without drilling. Two brackets are required for the two and three reel bank channels and three brackets are required when mounting the five reel bank channel.

\* Brackets and stands, include the required nuts, bolts and washers for mounting the hose reels on to them.

360 126



360 122



360 127



## GUN HOLDERS AND DRIP POCKETS

**360 126** Gun holder for hose reels.

**360 122** Wall mounted drip pocket.

**360 127** Wall mounted drip pocket and gun holder.

360 160 - 360 162 - 360 161

## FLOOR MOUNTING ACCESSORIES REEL STANDS\*

Allows mounting up to six reels in a bank. Its use is recommended when it is not possible or desired to hang reels from the ceiling or to a wall. Ideal for servicing two lubrication bays simultaneously. Six reels mounting stands include perforated inside panels and drip collection tray.

**360 160 Six reel stand for 501, 504 and 506 Series reels**

Dimensions: height 2.500 mm, length 1.543 mm, width: 760 mm.

**360 165 Six reel stand for 507 and 505 series reels**

Dimensions: height 2.500 mm, length 1.972 mm, width: 760 mm.

**360 164 Height adaptor for 360 160 and 360 165 reel stands**

Allow to increase the height of the six reel stands up to 500 mm (Total height using this adaptor: 3.000 mm).

**360 163 Five reel stand**

For mounting up to a five reel bank between two lubrication bays. Dimensions: height: 2.220 mm, length: 1.750 mm, width: 400 mm.

**360 162 Three reel stand**

For mounting up to a three reel bank between two lubrication bays. Dimensions: height: 2.220 mm, length: 1.200 mm, width: 400 mm.

**360 161 Two reel stand**

Height: 2.375 mm.

\* Brackets and stands, include the required nuts, bolts and washers for mounting the hose reels on to them.

Five, three and two reel stands can be used with 501, 504, 506 and 507 series reels.

Other stands available on request.



450 101

## WORKSITE TWO, FLUID AND ENERGY SERVICE COLUMN

The Worksite fluid and energy service module allows having all the fluids and energy outlets needed in a service bay always at hand and occupying a minimum area in the workshop.

Worksite also facilitates the installation of all elements needed in each working area: oil hose reels, air hose reels, electric cable reels, oil monitoring system, electricity outlets, Ethernet port, compressed air outlets or a waste oil suction pump for discharging mobile waste oil receivers. All these elements are mounted inside the module and it only takes 0,3 m<sup>2</sup> (1.983 x 500 x 500 mm).

All elements are easily accessible through two side doors for maintenance and inspection.

**All Worksite two modules include:**

- Two oil hose reels with 10 m x 1/2" hose 506 202.
- One air reel with 12 m x 10 mm hose 500 116.
- Two 230 V 50 Hz outlets.
- One 400 V 50 Hz outlet.
- One compressed air outlet with pressure regulator.
- One Ethernet connection port.

**450 100 Worksite two service module**

Includes all the elements listed above plus two hose end meters 365 603 at each oil hose reel outlet.

**450 101 Worksite two service module with oil monitoring system**

Includes all elements listed above plus two oil control guns 363 078, one AMS keypad (381 000) and two flow control units IFCU (381 501). (Memory module AMM 381 600 not included).

**Options:**

**559 201** Waste oil evacuation kit for waste oil drainers. DF50 double diaphragm pump with discharge hose and connectors for a fast, clean and efficient discharge of mobile waste oil drainers.